

B052 DIGITAL WATER BATH

This bath is fully double walled stainless steel made with wool insulation. The specimens are held by a shelf spaced out from the bottom. Complete with a digital thermostat and an electric stirrer for **continuous water recirculation**, ensuring a constant and uniform temperature of $60 \pm 1 \text{ }^\circ\text{C}$ or $37.8 \pm 1 \text{ }^\circ\text{C}$ as prescribed by the Standards.

The bath can hold up to 20 Marshall specimens

Capacity: 60 litres

Temperature range: from ambient to $95 \text{ }^\circ\text{C}$

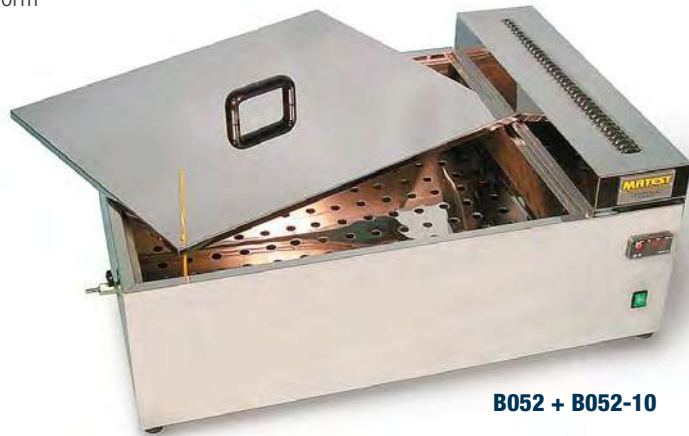
The bath is equipped with a dual safety thermostat to prevent accidental over-heatings.

Inside dimensions: 700x550x150 mm

Outside dimensions: 950x660x360 mm

Power supply: 230V 1ph 50-60Hz 1500W

Weight: 20 kg approx.



B052 + B052-10

B052-01 DIGITAL WATER BATH

Identical to mod. B052 but:

Inside dimensions: 430x420x160 mm

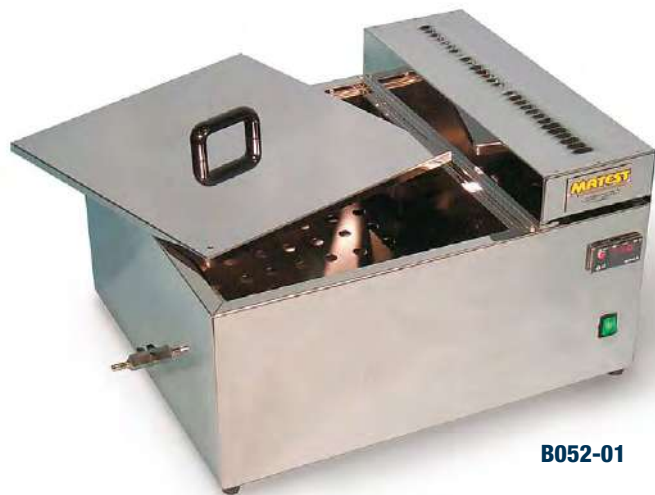
Outside dimensions: 620x500x330 mm

The bath can hold up to 9 Marshall specimens

Capacity: 30 litres

Power Supply: 230V 1ph 50-60 Hz 1200W

Weight: 15 kg approx.



B052-01

E136-01 DIGITAL WATER BATH

Identical to mod. B052 but:

Inside dimensions: 900x600x360 mm

Outside dimensions: 1050x680x630 mm

The bath can hold up to 80 Marshall specimens

Capacity: 200 litres

Power Supply: 230V 1ph 50-60 Hz 4000W

Weight: 55 kg approx.



B052-02

B052-02 DIGITAL WATER BATH WITH COOLING DEVICE

Similar to mod. B052 but equipped with cooling unit placed under the bath for controlling water temperatures where the ambient temperature is quite higher.

Temperature range from: $+ 3$ to $+ 95 \text{ }^\circ\text{C}$, accuracy: $\pm 1 \text{ }^\circ\text{C}$.

The bath can hold up to 12 Marshall specimens

Capacity: 45 litres

Inside dimensions: 635x360x205 mm

Outside dimensions: 800x430x1000 mm

Power supply: 230V 1ph 50Hz 1650W

Weight: 60 kg approx

ACCESSORY FOR MOD. B051...B052-02

B052-10 ALCOOL CONTROL THERMOMETER 0-100 $^\circ\text{C}$ subd. 1 $^\circ\text{C}$