

E092M KIT
MIXMATIC
AUTOMATIC PROGRAMMABLE COMPUTERIZED MORTAR MIXER HIGH PERFORMANCE

STANDARDS: EN 196-1, EN 196-3, EN 413-2, EN 459-2, EN 480-1 | DIN 1164-5, DIN 1164-7 | ASTM C305M | AASHTO T162

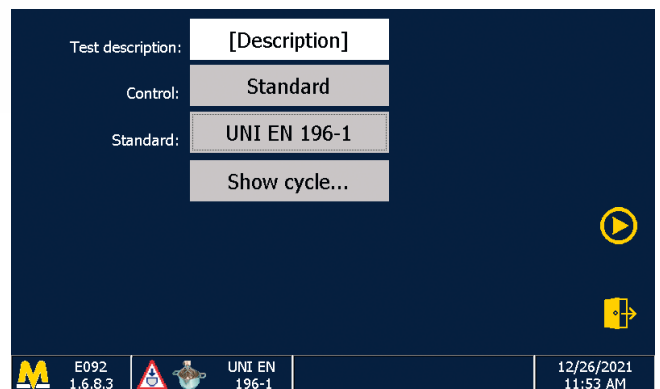
Mixmatic has an extremely sturdy fabricated frame for an intensive laboratory use. Complete with stainless steel polished beater, mixing bowl and automatic sand dispensers having dimensions and geometry to grant the correct sand insertion, without residual and disaggregation between fine and coarse portions. Dispenser for additives (see accessory mod. E092-05). Dispenser for automatic water addition (see accessory mod. E092-06).


E092M KIT
MAIN FEATURES

- Rugged design.
- Planetary transmission for silent and low maintenance operation.
- Transparent CE-conform protection of the mixing area, to allow the mixture looking during the test.
- Digitally controlled rotation speed.
- Easy and fast bowl insertion and removal.
- Safety system of bowl presence and correct position to avoid dangerous working, with double sensor of removed bowl with load/unload sequential discrimination.
- Emergency stop button.

Firmware:

- Different automatic programmable mixing cycles conforming to the a.m. Standards.
- The operator can also program up to 30 automatic personalized mixing cycles, easy to set through Touch Screen.
- Synchronised acoustic signals with cycle steps.
- Electronic control unit, that runs like a standard PC based on Windows operating system for the management and analysis of the data, test results, graphs. The touch-screen icon interface allows an easy set up of the parameters and immediate execution of the test.
Unlimited memory storage through the USB port.
- Rotational motor feeded through inverter to grant the max. precision of the rotational speed, adjustable by the operator on the display.
- Possibility of manual mixing cycle.
- Possibility to select different languages.
- Detailed indication of all the times (elapsed from the test start, residual to end test, elapsed from and test and bowl removal), state of cycle development with analogue bar, speed, active phase (sand, water), test state (correct execution or test interruption with lost results), type of current test.
- Graphic display TFT 7", 800x480 pixel, Touch Screen.

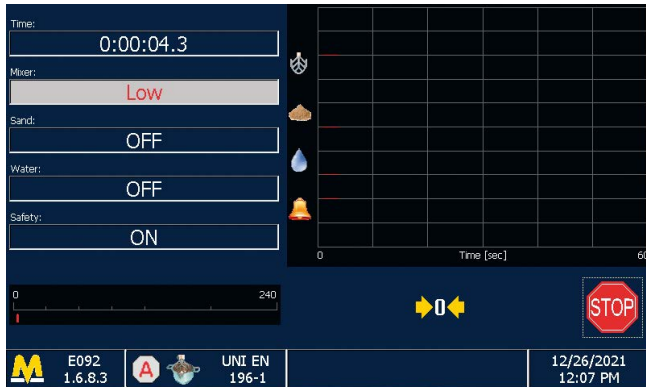
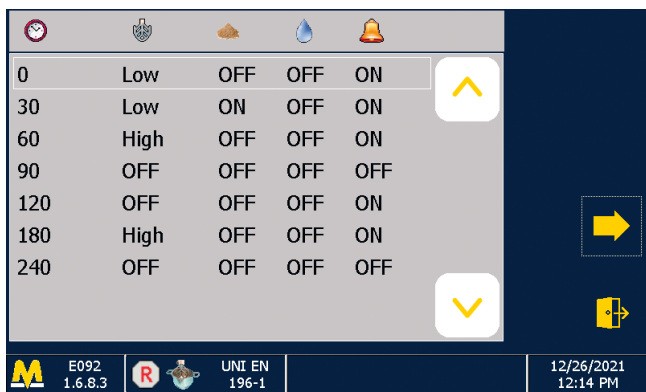


Selection of the Standard

Power supply: 230V 50-60Hz 1ph

Dimensions: 580x570x830 mm

Weight: 85 kg approx.

E092M KIT MIXMATIC**Test execution****Personalized cycle composition****E092-05****E092-06****ACCESSORIES and SPARES**

- E092-05** DISPENSER (supplementary) with hopper to ease the manual introduction of additives etc. into the bowl, also during the mixing phase.
- E092-06** DISPENSER (supplementary) with hopper for the automatic introduction (managed by the software) of water into the bowl, also during the mixing phase.
- E092-10** SPARE stainless steel bowl.
- E095-04** SPARE stainless steel beater, accurately polished.

- E097-01N** REFERENCE SAND, size from 0.08 to 2 mm to EN 196-1 Standard.
Bag of 1350 g. Pack of 16 bags for total of 21.6 kg



- E097-02** GRADED NATURAL SILICA SAND, type Ottawa, to ASTM C109, C778 Standards. Bag of 25 kg

**E097-02**

Use examples